

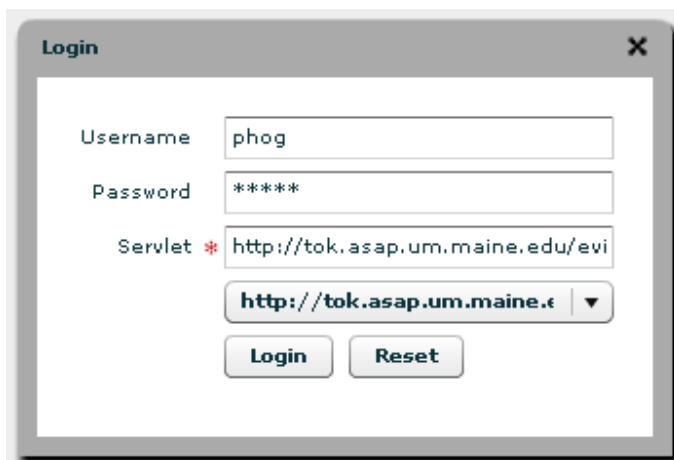
Eventviewer Notes

These notes provide a brief introduction to interaction with the EventViewer

The Eventviewer is an interactive tool for visualizing and exploring events. Events in this context are a data type with a temporal duration, a spatial footprint, and several possible thematic attributes such as event type.

The Eventviewer is accessible in its current form at <http://tok.asap.um.maine.edu/eviewer4/#>. A database of events is accessible for interacting with the viewer.

The Eventviewer has an opening login screen: Just click Login to start the viewer.



The screenshot shows a web browser window titled "Login" with a close button (X) in the top right corner. The login form contains three input fields: "Username" with the text "phog", "Password" with "*****", and "Servlet" with "http://tok.asap.um.maine.edu/evi". Below the Servlet field is a dropdown menu showing "http://tok.asap.um.maine.e" with a downward arrow. At the bottom of the form are two buttons: "Login" and "Reset".

You will see an opening screen as shown below.



The screenshot shows the "Query" interface of the Eventviewer. At the top, it displays "Event Occurrences: 23796". Below this is a timeline with "Select Start" set to "05/29/1848" and "Select End" set to "03/01/2009". The timeline has markers for years: 1848, 1864, 1880, 1896, 1912, 1928, 1944, 1960, 1976, 1992, and 2008. A blue double-headed arrow indicates the selected date range. Below the timeline is a "Hide Disabled" checkbox which is checked. On the left side, there is a tree view with three folders: "Event", "Location", and "Time", each with a folder icon and a checkbox.

This screen allows you to select events by event characteristics, location, or time. To select an event type, open the event folder and open the type folder. Several different event types are available for selection. The total number is given at the top of the screen (23,796). This number updates as you refine a selection. The time line at the top of the screen indicates the date range for the complete set of events in the database.

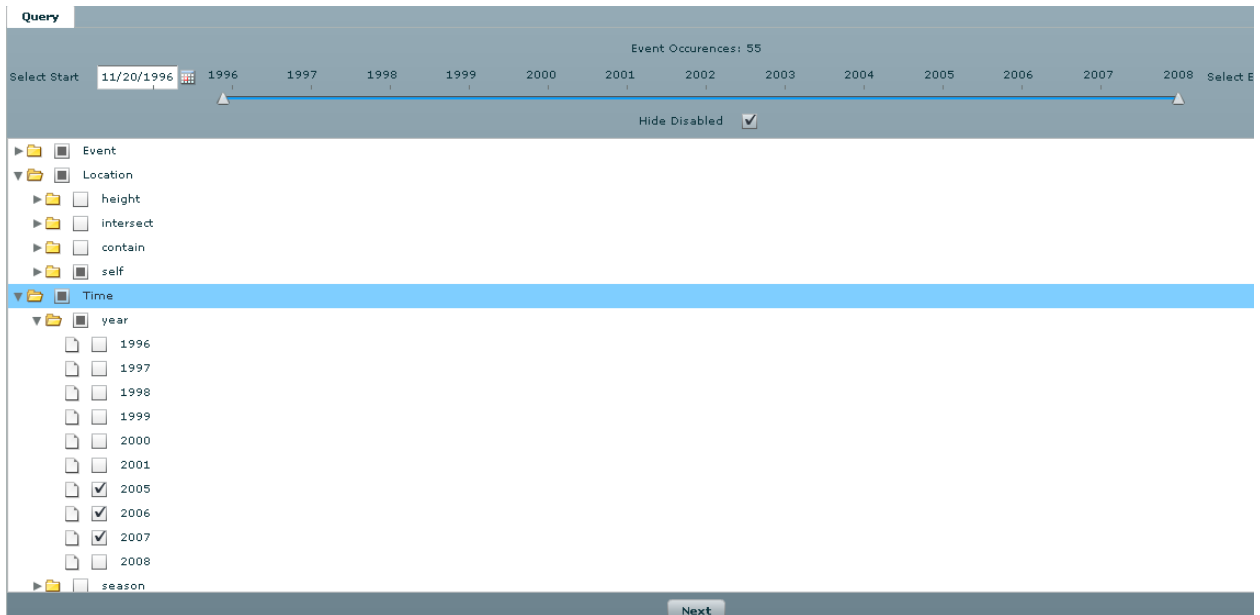


Select an event type for example flood. The event occurrence number updates to the number of flood events in the database and the time line updates to indicate the temporal range up this event set.

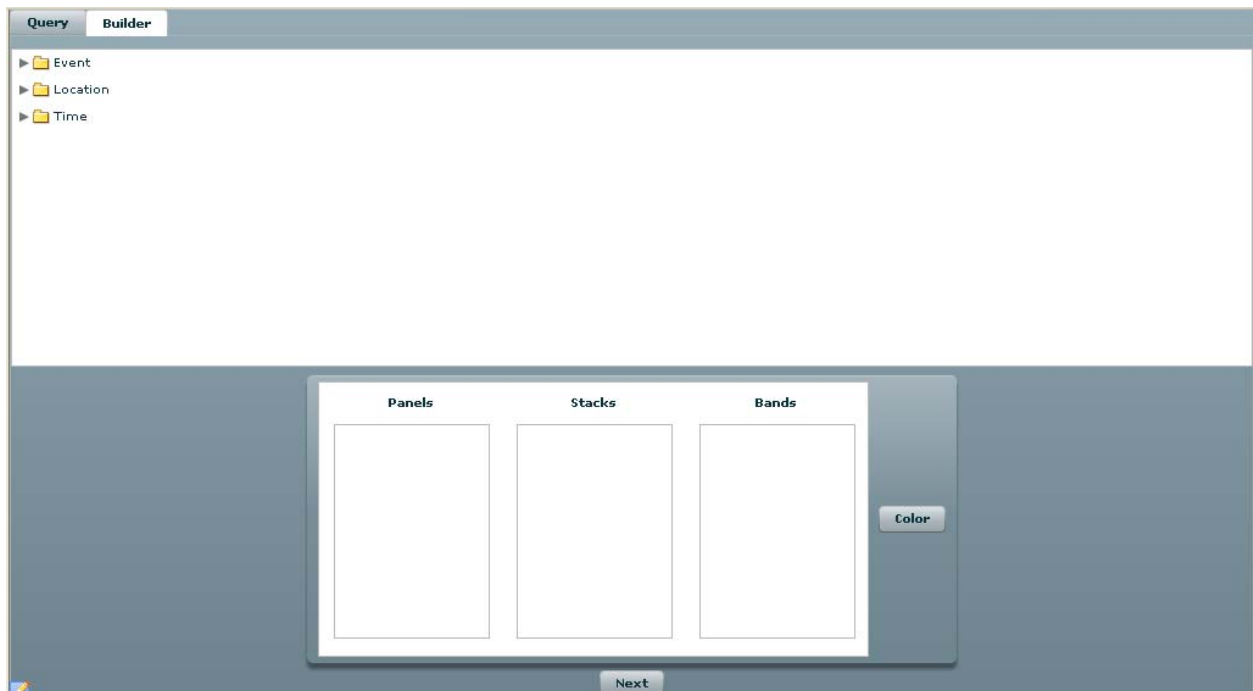
Next select the location folder. The self folder includes locations relevant for the selected event type (for flood events , this includes counties in Maine). Here we select a few counties.



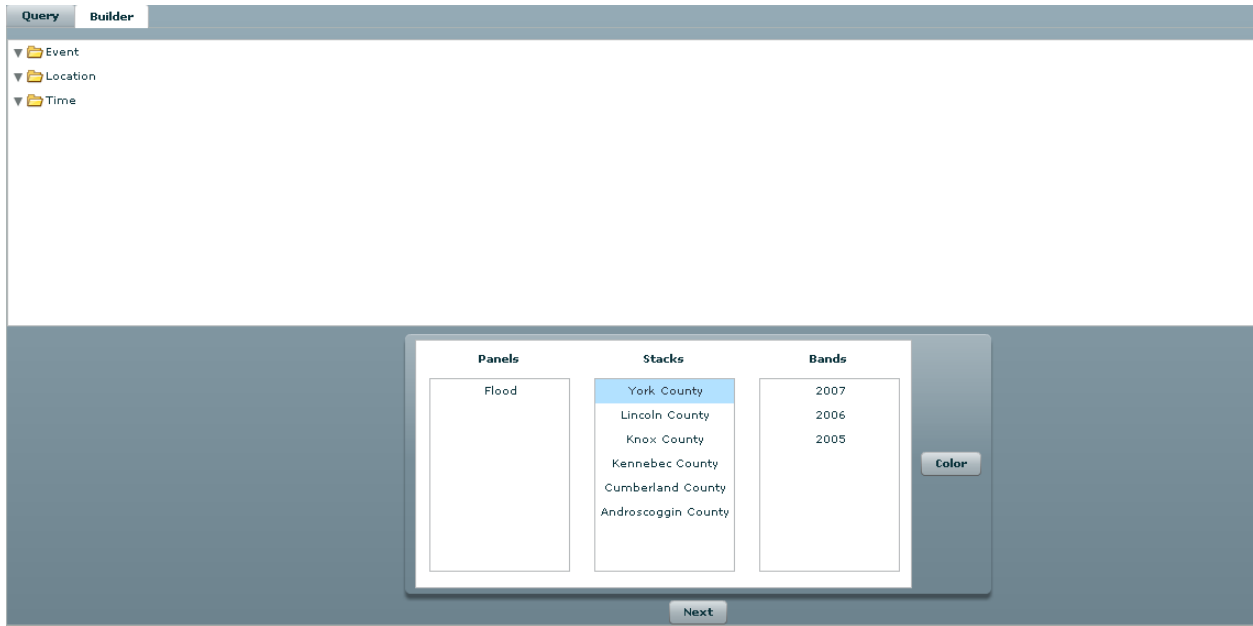
Next select time from the time folder. The time folder includes temporal categories for organizing events. One can organize the selected event type by year, season, months, etc. Here we select three years.



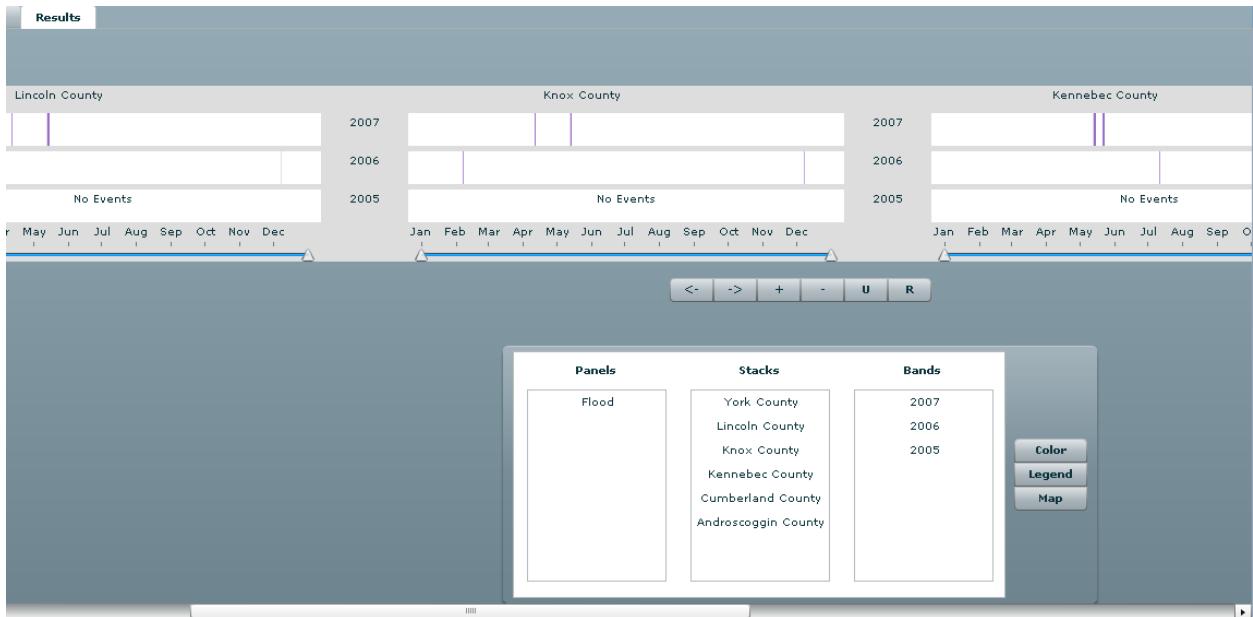
In the next step this category selections are assigned to graphic elements called bands, stacks and panels. Click the Next button to proceed to the Builder screen.



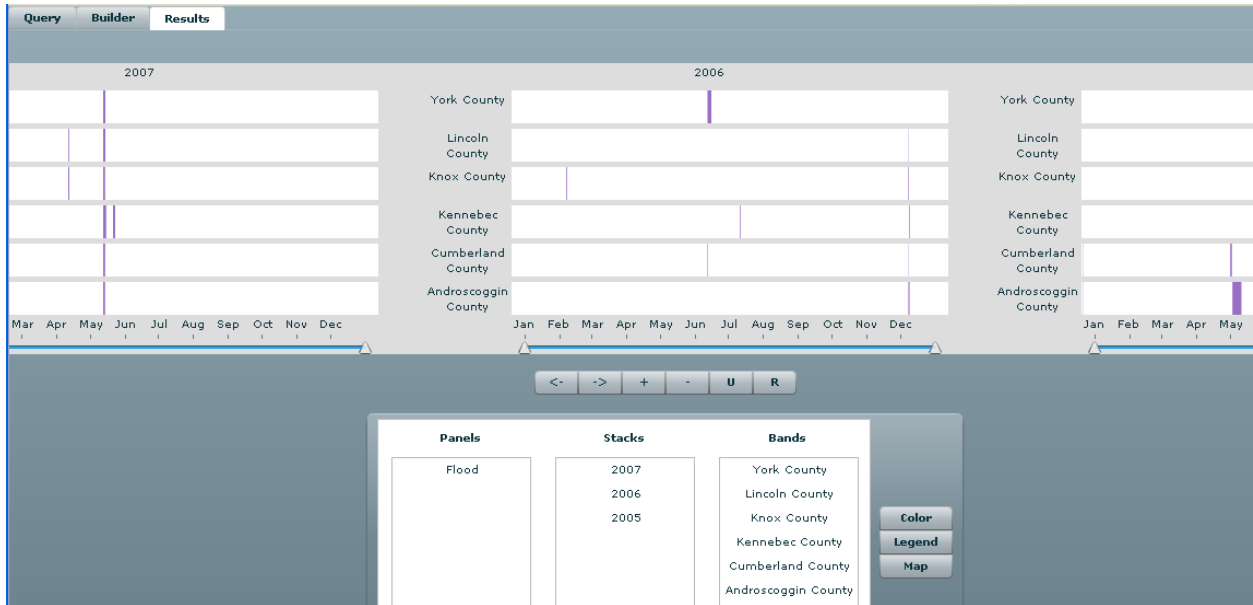
The Builder Screen displays the folders in the upper left and the Panels, Stacks and Bands containers at the bottom of the screen. One can drag an entire folder to a container or open a folder and drag a sub-folder to a container. The next screen shows that locations have been placed in the stack containers and the time folder in the Bands container, and the event type is placed in the Panel container.



Once assignment of categories (folders) to containers has been made click Next to proceed to the Result screen.



In the result screen, the events are displayed according to the category assignments. You can interactively change the assignment by dragging one container to another. For example to swap times in the band container with Counties in the Stacks container, simply click on the band label and drag the band container over the stack container. The view will be reconfigured as shown in the next screen.



One can click on an event in the result display to get a tooltip that provides event details as shown in the next screen.

